

## INDEX

*page 2*

**Swim and Ski Prosthesis**

*page 3-4*

**Swim Leg Fabrication Instructions**

*page 5*

**Ankle Installation Instructions**

*page 6*

**Activankle Operation Instructions**

*page 7 and 8*

**Activankle Cleaning Instructions**

*page 9*

**Swimankle General Instructions**

*page 10*

**Rampro Useful Links**

Any lower limb amputee will find it less physically demanding to swim with a fully plantar flexed prosthesis. Whether the individual is trying to set new speed records or just casually swimming, wearing a swimming prosthesis will reduce the amount of energy expended to move through the water. The single amputee becomes bilaterally symmetrical. Each arm stroke will be the same whether or not he or she is kicking for power. For the bilateral amputee, the legs will act like the keel of a boat. They will keep the bilateral going in a straight line and will stop the torso from gyrating with each stroke, thus reducing energy expended.

My name is Michael Ross, and I am the inventor of the Activankle. I am a bilateral BK who grew up in Southern California. Surfing, sailing, scuba diving, swimming competitively and water polo were major parts of my life. After my accident, it was important to me to be able to resume my water activities. Thus the Activankle was developed. I make no claim that this is the perfect device for swimming or other water activities, but it does the task it is intended to do. However, what you attach to the Activankle will make a noticeable difference in the performance of the swim prosthesis. Even for the amputee not interested in performance, the following information is useful for making a prosthesis that will hold up to the rigors of water and salt.

After several prototypes, I found that the swim leg that works best is a hollow exoskeletal leg with a Symes foot. The advantage of exoskeletal over endoskeletal (without foam) is increased hydrodynamic efficiency. The exoskeletal allows the water to flow undisturbed along the length of the leg and onto the foot. This could be accomplished with a foam covered endoskeletal leg but foam has a distinct tendency to absorb water and even if the foam is waterproofed, it will create too much positive buoyancy. By drilling two holes in the hollow section of the exoskeletal leg and allowing water to fill this cavity, excess positive buoyancy is eliminated. When a foam-covered foot is attached to the hollow exoskeletal swim leg, ideal positive buoyancy is attained. A Symes foot is another major factor for increasing hydrodynamic efficiency. When the Activankle is bolted to a Symes foot, the Activankle pivots from a point closely resembling the natural ankle joint. When these two are attached to the exoskeletal leg and fully plantar flexed, the top of the Symes foot will line up evenly with the anterior of the leg. Water flowing undisturbed along the leg and directly onto the top surface of the foot is what allows the foot to generate power.

Suspension is very important. In the water, the prosthesis should feel as if it were bearing weight. If not, each kick will allow the residual limb to wobble inside of the socket, creating friction, which everyone knows is not good, and the energy will not be fully transferred to the foot. Silicone, urethane and latex suspension sleeves, work very well. They also keep water out. The addition of an auto expulsion valve creates superior suspension. For those using a pin suspension liner such as Iceross, Alps or Alpha Liner, the only shuttle locks I have recently seen two that appear to be water, salt and contamination proof are [Fillauer's Gator Grip Lock](#) and [Coyote Design's Air-Lock](#). Whether you build endoskeletal or exoskeletal, the components used should be waterproof and corrosion resistant to salt. [Kingsley's Steplite](#) is Rampro's choice of foot. Water will not damage this foot. It has a graphite keel, the foam does not absorb water, and it can be ordered in several heel heights including flat. A flatty is ideal for use around the water where barefoot is usually the norm. [Ohio Willow Woods Carbon Copy II Symes](#) and Campbell-Childs waterproof Symes will also work well. A lightweight aqua shoe with no heel such as Nike's "Reefwalker" will protect the prosthetic foot and the real foot.

If you decide to build a hollow exoskeletal, you can laminate a pyramid into the distal end of the leg. Two that work very well are [Ohio Willow Woods's Composite laminating Pyramid Adapter \(FND-994000\)](#) and USMC's all titanium Cup Connector Kit (15113/large or 15143/regular). If the leg will also be used for snow skiing a low profile rotatable pyramid adapter should be used. Snow skiing typically requires the foot to be toed out 4 to 8 degrees. Rampro has stainless steel pyramid adjustment set screws in metric or SAE. Titanium is the best material for the pyramid and pyramid adapter. Some manufacturers' stainless steel parts use a lot of iron and these parts will continually leech a red oxide after use in water and even more so after use in salt water.

The hollow exoskeletal leg with a pyramid interface also makes an ideal ski leg. The unlocked Activankle mounted to a Symes foot flexes from the same place as the human ankle and the ski boot manufacturers do know where the human ankle flexes. The hard exoskeletal leg solidly transfers energy to the tongue of the ski boot. The pyramid system easily allows for proper alignment and the rotatable adapter allows the toe to be set correctly. The only optional modification for a ski leg would be the addition of a threaded stainless steel plate (approx.1"x1"x1/8") laminated into the leg. Placement of the plate depends on the brace used. (e.g. For a Townsend brace, approximately 3" or 8cm below the patella.) This will allow a hard knee brace to be securely attached to the prosthesis. A matching hole needs to be drilled in the brace to accommodate the bolt or set screw protruding from the threaded plate. I use a partially threaded 1/4-20 bolt with 1/8" of threads. Cut off the bolt head so that the end of the non-threaded (smooth) bolt section is flush with the surface of the brace. A screwdriver slot can be cut into the end of the bolt with a hacksaw for easy install and removal of the bolt. With the easy to take on and off brace on top of my suspension sleeve, I have great suspension, extra stability and added safety.

If you decide not to fabricate the Hollow Exoskeletal leg yourself, Rampro can have your Hollow Exoskeletal leg fabricated for you from a walking alignment. Call Rampro for details, or email [Darren Vincent](#). I hope this will answer a lot of questions. I do not consider this the only way to make a swim or ski prosthesis, but it works well for me as you can see in these video clips. Any comments or responses will be gladly accepted.

Sincerely



## Hollow Exoskeletal Fabrication Instructions

Slides by Darren Vincent [viewed here](#)

---

1. Duplicate alignment of prosthesis which patient uses for walking. Duplicate in vertical alignment fixture or equivalent.
2. Prepare cast for laminated socket.
3. Pull one layer of 1/2 ounce felt over model. (optional)
4. Pull one layer of nyglass over the felt (optional).
5. Measure the length of the fiberglass stockinette needed (twice the length of the plaster model). Pull fiberglass over the model and tie with nylon thread in center and invert the other half over.
6. Pull one final layer of nyglass stockinette over model.
7. Pull a PVA bag over the model. Tape it off below the lower suction hole on the suction pipe.
8. Measure and mix enough resin to laminate the socket (e.g. 200g of resin for medium sized BK). For best results, use either epoxy or acrylic resin.
9. Do not remove PVA bag after resin has set. Bag will be separator for A/B foam.
10. Assemble **Activankle**, socket adapter and laminating pyramid as one assembly.
11. Install cast back into vertical alignment fixture. Bolt **Activankle** assembly (Step #10) to vertical alignment footplate.
12. Apply release agent to inside of laminating pyramid for removal later on.
13. With model in place and ankle assembly bolted into fixture, wrap 1mm thick polyethylene sheet or x-ray film around model and laminating pyramid. Leave enough room around model to pour A/B foam.
14. Secure polyethylene sheet with tape so as not to leak at bottom around laminating pyramid.
15. Measure and mix enough A/B foam to fill the opening by 1/3 the distance.
16. Pour into space between socket and polyethylene sheet.
17. Remove polyethylene sheet after the foam has set (approximately 30 minutes).
18. Using a rasp, shape the A/B foam according to the patient's measurements.
19. Use micro balloons around sharp edges and to fill any large holes.
20. Smooth foam and micro balloons with Durite. Finish of foam is factor in the overall finish of limb.
21. Remove laminating pyramid from end of foam and smooth edges so they won't harm PVA bag.
22. Pull PVA bag over foam and seal end. Pull PVA far enough to obtain suction.
23. Pull one layer of nyglass stockinette over model.
24. Reinforce the end where the pyramid is going to be placed. Use either carbon fiber stockinette or carbon fiber matting.
25. Place pyramid on end.
26. See note at bottom for skier's knee brace attachment plate. (optional)
27. Measure and cut enough fiberglass stockinette needed (twice the length of the model). Pull fiberglass over the model, tie around and invert other half over.
28. Measure and cut enough nyglass stockinet to cover model (twice the length is needed).
29. Measure and mix enough resin to laminate the model (use acrylic or epoxy resin).
30. Remove from cast and separate the outer lamination from the inner socket and foam. Dispose of foam. Trim and smooth socket.
31. Scuff the outer proximal edges of the inner socket and the inner edges of the hollow limb.

32. Paint a thin coat of resin to the outside edge of the inner socket and install into limb. Turn prosthesis upside down until resin hardens.
33. Blend edges of the inner and outer together and smooth.
34. Drill two 3/8" holes in the posterior of prosthesis. Bottom edge of one hole is tangent to top edge of laminating pyramid. Second hole is located at upper end of hollow section, but not so high as to be covered by a suspension sleeve. Be careful not to drill through inner socket. These holes will allow hollow section to fill with water and create a neutral buoyancy when going into the water.

**NOTE:** If the leg will be used for skiing, the use of a hard knee brace is recommended. Laminate a stainless steel plate (approx.1"x1"x1/8") with a single threaded hole (1/4" or 6mm is sufficient) into the leg. Placement of the plate will depend on the brace used. (e.g. For a Townsend brace, threaded hole in plate should be approximately 3" or 8cm below patella on tibial centerline. After leg is completed, drill matching hole in brace. For best results use a partially threaded bolt. Cut threaded end so that 1/8" of threads remain. Cut smooth section of bolt so that when the brace is in place, the end of the cut off bolt will be flush with the surface of the brace. A screwdriver slot can be cut into the end of the bolt with a hacksaw for easy install and removal of the bolt.

**These are fabrication guidelines. Quantity of material used will depend on the patient's weight and activity level.**

**Rampro can have your Hollow Exoskeletal leg fabricated for you from just a walking alignment. Call Rampro for details, or email [Darren Vincent](mailto:Darren.Vincent@rampro.com).**

**Prosthetists:** Phone, Fax, Mail, or [E-Mail for Pricelist](#)

# **ACTIVANKLE® or SWIMANKLE®** Installation Instructions **Rampro**

*(Read entire instructions before installing)*

---

## **1. Foot Selection**

Use a Symes foot, [Kingsley's Steplite®](#) is Rampro's #1 choice. Water will not cause an early death to this foot. It is also available in several heel heights including 0" for barefoot use. Other feet include Ohio Willow Wood Carbon Copy 2 Symes and Campbell-Childs *Waterproof Symes*

## **2. Foot Bolt Installation**

Use a 10mm bolt. Rampro supplies a 10m x 20m stainless steel bolt for use with the Kingsley *Steplite* or a 10m x 30m stainless steel bolt for use with most other Symes feet.

**\*\* VERY IMPORTANT \*\*** - ***Bolt should not exceed 1/2" or 13mm above the mounting surface of the foot.***  
If these limits are exceeded damage to the ankle will occur and the warranty will be void. Do not stack lock washers if the bolt is too long. Cut the bolt to the proper length.  
***If foot bolt insert does not have a flange with 4 shallow holes, tighten foot bolt to 15 foot pounds or 180 inch pounds or 2.1 kilograms per meter. Do not over tighten. Do not use Loctite® or any other bolt adhesive. Do not use lock washers. Do not stack washers.***

If foot bolt insert has a flange with 4 shallow holes (*Activankle 91-100 and later or Swimankle 3-101 and later*), tighten footbolt according to foot manufacturers specifications or industry standards.

## **3. Foot Modification**

Some foam will need to be removed on the medial side so as to access the ankle handle. The foam on the posterior side should be removed or ground very thin so as not to inhibit the ankle from plantar flexing. Bolt the ankle to the foot and mark the area to be removed. Remove the ankle from the foot and grind. Be conservative. Grind away only as much foam as is necessary to access the handle and allow the ankle to fully plantar flex.

## **4. Drilling Dowel Pin Hole**

To prevent ankle rotation, Rampro supplies a 5/32" x 1" stainless steel dowel pin. *An optional dowel pin drilling template (ADPDT) is available from Rampro.* Use a 5/32" drill. Drill 5/8" or 16mm aft (posterior) of foot bolt center. Drill 5/8"-11/16" or 16mm-18mm deep. Install dowel pin and ankle to foot. Arrow on top of ankle points forward (anterior).

## **5. Attachments**

Titanium parts are recommended for weight and corrosion resistance. The ankle accepts a standard 4 hole pattern. Rampro supplies 4 - 6 x 20mm flat socket head stainless steel screws. ***Tighten these to 40 inch pounds. Do not use Loctite® or any other bolt adhesive.*** Stainless steel adjustment set screws are available from Rampro.

# ACTIVANKLE® OPERATION INSTRUCTIONS

Rampro

*(If there is no movement between the top and bottom surfaces of **Activankle**, then the ankle is locked.)*

---

## Unlock Ankle

Rotate the D-ring handle 180° (1/2 turn) *in the direction of the unlock arrow until it stops*. It is not necessary to pull on the D-ring. Rotate D-ring with thumb and index finger.

**Note:** Do not store the **Activankle** in the locked walking position when the **Activankle** is new. The locked walking position requires a break-in period before the ankle will unlock easily from this position. If it is difficult to start the rotation of the D-ring handle when unlocking from the walk position, extra thumb or hand pressure may be necessary. **Do not use tools to rotate handle.**

## Positioning Foot

Move the foot to the desired walk or swim position. The **Activankle** is in the swim position when fully plantar flexed. The **Activankle** is in the walk position when the top and bottom surfaces are parallel. A slight resistance will be felt when moving the **Activankle** to the walk position. When resistance ceases, the **Activankle** is ready to lock.

## Lock Ankle

*The **Activankle** must be very close to the walk or swim position to lock.* Rotate the D-ring handle 180° (1/2 turn) *in the direction of the lock arrow until it stops*. If the handle will only partially rotate, (do not force), then turn the handle back to the unlocked position and reposition the foot slightly. *The **Activankle** must be very close to the walk or swim position to lock or binding will occur.* If the handle has become bound between the lock and unlock positions, move the **Activankle** to the correct walk or swim position and then continue to rotate handle. Note: This is more easily accomplished when the **Activankle** is attached to a foot and a prosthesis.

## Tips

- When the **Activankle** is new, it may be necessary to apply more pressure to start D-ring rotation when unlocking the walk position.
- The **Activankle** must be very close to the walk or swim position to lock or binding will occur.
- The **Activankle** is intolerant of sand or dirt. If the neoprene cover becomes cut or torn, it is easily repaired with neoprene cement. Don't wait. Repair it as soon as possible.
- ***If the D-ring handle becomes difficult to rotate, do not force with pliers or any other tool. It is time to disassemble and clean.*** If the **Activankle** stops functioning properly, use the cleaning kit that came with the **Activankle** or the **Activankle** may be returned to Rampro for cleaning. (\$35 + shipping)

The **Activankle** may also be used for snow skiing or rowing in the unlocked position. Snow skiing in the locked position will void warranty.

---

ACTIVANKLE and SWIMANKLE by Rampro

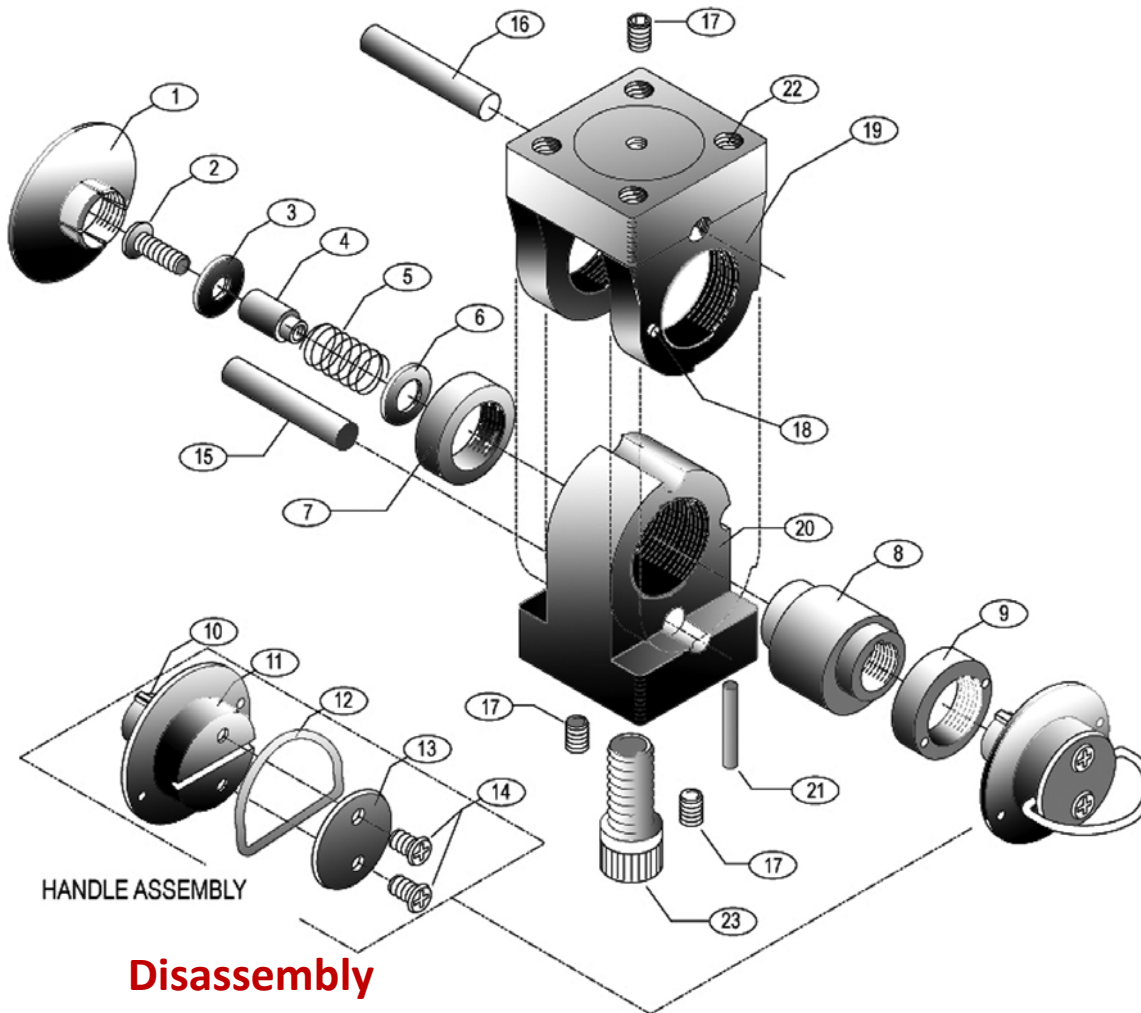
514 S Clementine St, Oceanside CA 92054 / Phone (760) 944-9595 - Fax (760) 944-3641 /  
<http://www.rampro.net> / E-mail: [support@rampro.net](mailto:support@rampro.net)

# ACTIVANKLE® Cleaning Instructions

Read Entire Instructions Before Proceeding

Rampro

## Parts List



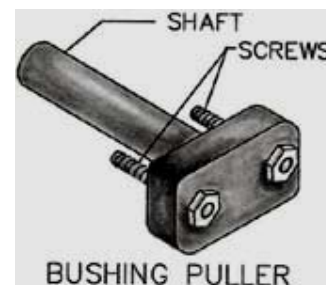
1. End Cap
2. Machine Screw  
(SS Truss Head 8-32 x 1)
3. Washer
4. Sleeve (SS) \*
5. Spring (SS)
6. Washer
7. Bushing
8. Cam
9. Bushing
10. Woodruff Key (1/8 x 1/2)
11. Handle Body
12. D-ring
13. D-ring Cap
14. Machine Screw (2)  
(SS Oval Head 8-32 x 3/8)
15. Lower Dowel
16. Upper Dowel
17. Set Screw (3) (SS 10-24 x 1/4)
18. Handle Locking Pin
19. Upper Ankle
20. Lower Ankle
21. Dowel Pin (SS 5/32 x 1)
22. Threads (M6 x 1) \*\*
23. Socket Head Cap Screw  
(SS M10) \*\*\*

## Disassembly

- a. Unlock the ankle.
- b. Remove D-ring (12) and D-ring cap (13). Cut nylon tie-wraps and remove neoprene cover.
- c. At a point near the LOWER DOWEL (15), insert a flat-blade screw driver under the END CAP (1) lip. Pry up and remove END CAP.
- d. Using a Phillips screw driver, remove MACHINE SCREW (2).
- e. Remove WASHERS (3 and 6), SPRING (5) and SLEEVE (4). If any of these items remain lodged in the
  - a. center of the CAM (8), they can be pushed out after the HANDLE ASSEMBLY (10 thru 14) is removed in step 1.f.
- f. Pull the HANDLE ASSEMBLY from the UPPER and LOWER ANKLE (19 and 20).
- g. Insert shaft of Bushing Puller into CAM (8). Attach Bushing Puller to the BUSHING (7 or 9). Hand tighten the screws. **Do not over tighten** Push or tap end of shaft until BUSHING releases.
- h. Repeat step (1.g) to remove the other bushing.

### Tools required:

- Bushing Puller (ACK)
- Teflon grease
- #2 Phillips screw driver
- Clean cloth
- Flat screw driver



- i. Removing the cam from the ankle assembly requires accurate alignment of the bushing holes in the upper ankle and the large diameter (lobe) of the cam. **Grasp the ankle assembly in both hands** and while exerting thumb pressure on the cam end, slowly pull and rock at the ankle pieces until alignment is close enough to push out the cam. In some extreme cases it may be necessary to tap the cam out after proper alignment.
- j. Separate the upper and lower ankle pieces. No further disassembly is required for cleaning.

## Cleaning

Wipe all parts thoroughly with a clean cloth. Soap and water or a mild solvent are OK.

\*If parts are scored from sand, use a **fine** grit sandpaper or emery cloth to smooth scratches.

## Reassembly

- a. Apply a thin coat of Teflon grease in the following places:
  - 1. Outside surface of CAM (8).
  - 2. The top groove, the large diameter bore and the vertical sides of the LOWER ANKLE (20).
  - 3. The inside bore of the two BUSHINGS (7 and 9).
  - 4. The small diameter shaft of the HANDLE BODY (11) and the WOODRUFF KEY (10).
- b. Slide the upper and lower ankle pieces together and align the cam and bushing holes.  
Make sure that the upper and lower ankle halves are *matched (front and rear) correctly*.
- c. Insert the cam in the upper and lower ankle *bushing and cam holes* with keyway for woodruff key (10) on the same side of the ankle as the HANDLE LOCKING PIN (18). Press in place.  
*\*If keyway for woodruff key (10) is at both ends of the cam, note the center hole diameter difference at each end of the cam. Insert the cam so that the cam's smaller hole end is on the same side of the ankle as the HANDLE LOCKING PIN (18).*
- d. Note the two small *puller plate attachment holes* in each bushing. With these holes **\*facing out\***, press both bushings into the ankle bushing holes. It may be necessary to *tap the bushings in place*.
- e. Align the WOODRUFF KEY (10) and install the HANDLE BODY (11) into the cam hole. Position over HANDLE LOCKING PIN (18).
- f. Refer to parts breakdown drawing and place items 3 thru 6 over the MACHINE SCREW (2). Apply a drop of Loctite® to the threaded end of the screw and install this parts group into the hole at the other end of the cam. *Do not over tighten screw*. It may be necessary to loosen screw 1/8 to 1/4 turn for handle to operate smoothly.
- g. Snap END CAP (1) into place.
- h. Reinstall neoprene cover, D-ring and D-ring cap.
- i. Install and securely tighten two new tie-wraps. Reassembly is complete.

***If foot bolt insert does not have a flange with 4 shallow holes, tighten foot bolt to 15 foot pounds or 180 inch pounds or 2.1 kilograms per meter. Do not over tighten. Do not use Loctite® or any other bolt adhesive. Do not use lock washers. Do not stack washers.*** If foot bolt insert has a flange with 4 shallow holes, (*Activankle 91-100 and later*), tighten foot bolt according to foot manufacturers specifications or industry standards. Use of Loctite® or lock washers is OK.

## Operation

**Swimankle** is locked when the HANDLE (6) is in the 6 o'clock position. To unlock, rotate HANDLE forward and up. Move foot to maximum plantar-flexed position for swimming then rotate HANDLE back to locked position. **Ankle must be fully plantar-flexed or in correct walk position in order to lock.**

## Converting ankle to left or right operation

For BK's, the **Swimankle** handle is most easily operated when handle is on the medial side of ankle. For AK's, it may be necessary to try both medial and lateral positions and let patient decide. Use a 3mm Allen wrench to remove SCREWS (3). Move HANDLE and END CAP (4) to opposite sides of ankle and replace SCREWS.

## Servicing

### Tools required:

3mm, 3/32" and 5/32" Allen wrenches, Teflon or silicon grease

### 1. Disassembly

Remove ankle from foot. Unlock ankle. Insert 5/32" Allen wrench into foot bolt hole and loosen PIVOT PIN SET SCREW (10). Remove PIVOT PIN (7) and separate UPPER (1) and LOWER (2) ankle halves.

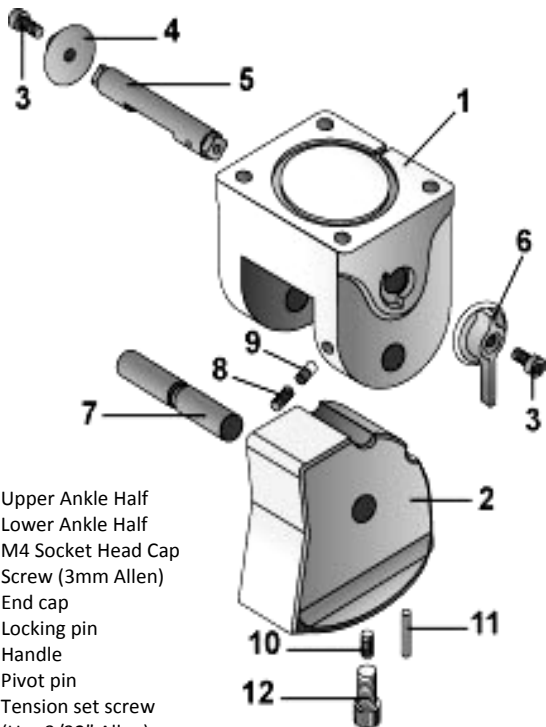
If it is necessary to remove and clean LOCKING PIN (5), use a 3/32" Allen wrench to loosen TENSION SET SCREW (8). Loosen 5 or 6 full turns. Only remove HANDLE or END CAP that is on the same side of ankle as the TENSION SET SCREW. Remove locking pin.

**2. Cleaning** Wipe all parts thoroughly with a clean cloth. Soap and water or a mild solvent are OK.

\*If parts are scored from sand, use a *fine* grit sandpaper or emery cloth to smooth scratches

### 3. Reassembly

- Apply a **thin** coat of Teflon or silicon grease to vertical sides of **LOWER ANKLE HALF**, **PIVOT PIN** and **LOCKING PIN**. If **HANDLE** has been removed, apply grease to area where square hole of **HANDLE** and end of **LOCKING PIN** contact each other, otherwise do so after reassembly.
- Insert **LOCKING PIN** in unlocked position.  
**Do not force LOCKING PIN past TENSION PIN (9).** If necessary, depress **TENSION PIN** with small tool and then finish inserting **LOCKING PIN**.
- Attach **HANDLE** or **END CAP**.
- Tighten **TENSION SET SCREW**. Tighten until **HANDLE** will not move, then loosen approximately 1/2 to one full turn. Handle should snap into locked and unlocked positions.
- Assemble ankle halves. Insert **PIVOT PIN** and align so that end marking on **PIVOT PIN** is vertical. Install and tighten **PIVOT PIN SET SCREW** **lightly (8-10 inch pounds)**. **Do not over tighten.**



1. Upper Ankle Half
2. Lower Ankle Half
3. M4 Socket Head Cap Screw (3mm Allen)
4. End cap
5. Locking pin
6. Handle
7. Pivot pin
8. Tension set screw (Use 3/32" Allen)
9. Tension pin (cannot be removed)
10. Pivot pin set screw (Use 5/32" Allen)
11. M10 SS Foot bolt
12. 5/32x1" SS Dowel pin

Use Blue **Loctite**® on this screw only. Tighten foot bolt according to foot manufacturers' specifications or industry standards. Use of **Loctite**® or lock washers is OK.

## **Rampro Links**

**Products for making a swim leg**

---

### **Feet**

[Kingsley Steplite Symes](#)

[Ohio Willow Wood Carbon Copy 2 Symes](#)

[Ohio Willow Wood Impulse Symes](#)

---

### **Knee**

[Aulie Devices Water Sports Knee](#)

---

### **Shuttle Locks**

[Coyote Design's Air-Lock](#)

[Fillauer's Gator Grip Lock](#)

---

### **Pyramid Components**

[Kingsley](#)

[Hosmer](#)

[American Prosthetic Components](#)

---

### **Other Links**

[Handicapped Scuba Association International](#)

[Scuba Diving Magazine](#)

[Check out the Gear Reviews, especially the fins\)](#)

[Alberta Association of Disabled Skiers](#)

[Amputee Coalition of America - ACA](#)

[Outback Mfg](#)

**(Precision CNC Machine Shop with CAD/CAM engineering.  
Our highly skilled team will direct you from conception to  
design to fabrication of your product)**